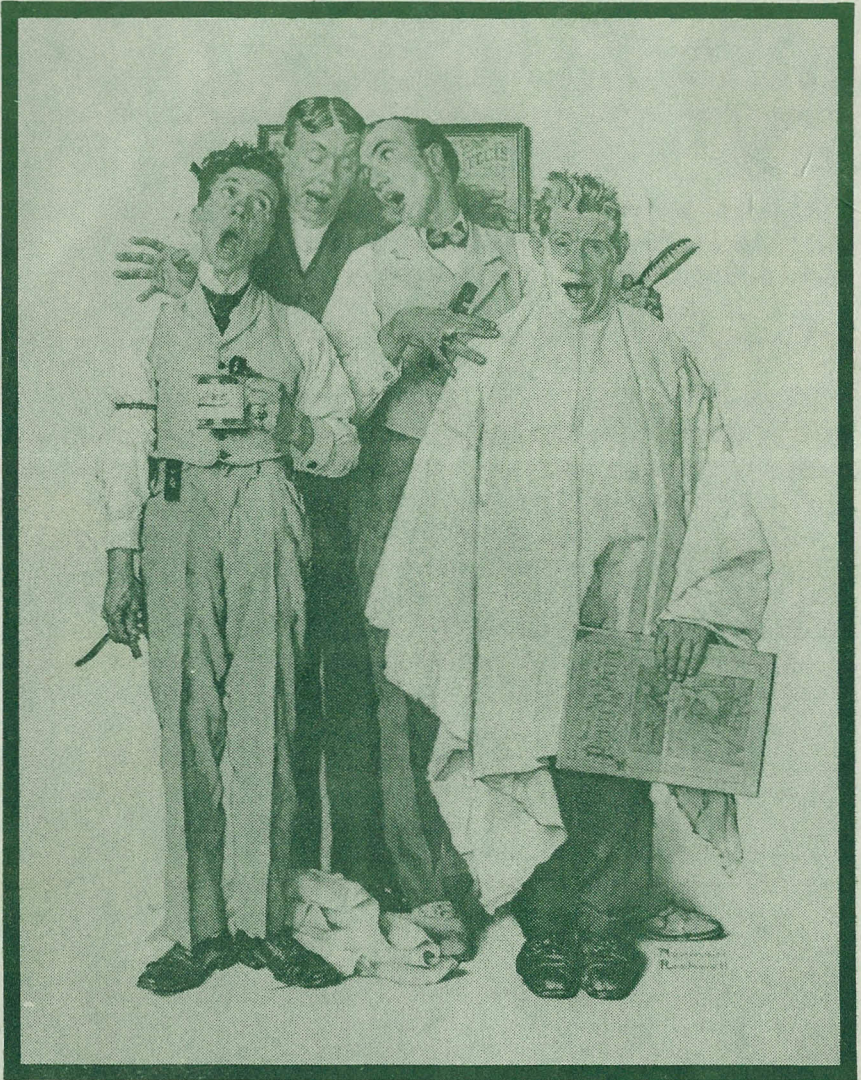


THE FORT WALTON BEACH, FLORIDA  
EMERALD COAST CHORUS PRESENTS

# DON'T THROW THE PAST AWAY

ELEVENTH ANNUAL  
BARBERSHOP HARMONY CONCERT



SATURDAY, MARCH 4, 1989

8:00 P.M.

OKALOOSA WALTON COMMUNITY COLLEGE

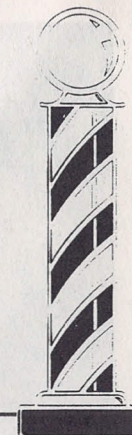




THE FORT WALTON BEACH EMERALD COAST CHORUS  
PRESENTS ITS 11th ANNIVERSARY SHOW

# 'DON'T THROW THE PAST AWAY'

FEATURING  
Harry Blackman as "GRANDAD"  
and  
Jeremy James as "JOHNNY"



## 'FIRST HALF'

DON'T THROW THE PAST AWAY.....Chorus  
YES SIR, THAT'S MY BABY.....Chorus  
YOU GOTTA BE A FOOTBALL.....Football Hero's and  
HERO Niceville H.S. Cheerleaders  
THE LAST TIME I SAW HENRY .....Chord Commanders  
HALLS OF IVY .....Chorus  
MY FRATERNITY PIN.....The Newcomers  
BUNDLE OF OLD LOVE LETTERS...Chord Commanders  
TIME WAS .....Emerald Choice  
DEAR OLD GIRL.....Chorus  
THEY'RE ALL OUT OF STEP .....Generation Gap  
BUT JIM  
MCNAMARA'S BAND .....Chorus  
LET A SMILE BE YOUR .....Generation Gap  
UMBRELLA

HOW YA GONNA KEEP 'EM .....Chorus  
DOWN ON THE FARM  
SIXTEEN TONS .....Emerald Choice and  
The Newcomers  
BYE BYE BLUES .....Chorus  
FROM THE FIRST HELLO.....The "Eight" of Hearts  
TO THE LAST GOODBYE  
DON'T THROW THE PAST AWAY .....Chorus

## 'SECOND HALF'

*EMCEE -- Mr. Reed Sampson, WMMK (K-92)*

AWARD OF HARMONY PRESENTATION

THE EVENING'S GUEST QUARTET

**BASIN STREET**

FINALE

"WE SING THAT THEY SHALL SPEAK"  
"KEEP THE WHOLE WORLD SINGING"





**THE FORT WALTON BEACH  
EMERALD COAST CHORUS**

**DIRECTOR: Ellis Morey**

Atkins, E.	Dibler, E.	James, J.	Neid, R.
Berghage, R.	Dixon, J.	Jolly, C.	Norman, R.
Blackman, H.	Ellis, C.	Landon, C.	Sampson, R.
Breedon, J.	Fielder, R.	Leon, L.	Schneider, F.
Campbell, J.	Fitzgerald, R.	Lester, D.	Sheldon, W.
Carey, M.	Given, J.	Mallette, T.	Shirey, M.
Chellberg, C.	Harris, J.	Mercer, F.	Simshauser, W.
Coty, P.	Harrison, J.	Miller, D.	Talley, P.
Cowden, W.	Jackson, J.	Morey, E.	Warwick, W.
Dennis, J.	James, D.	Mulvey, J.	Whittlesey, P.





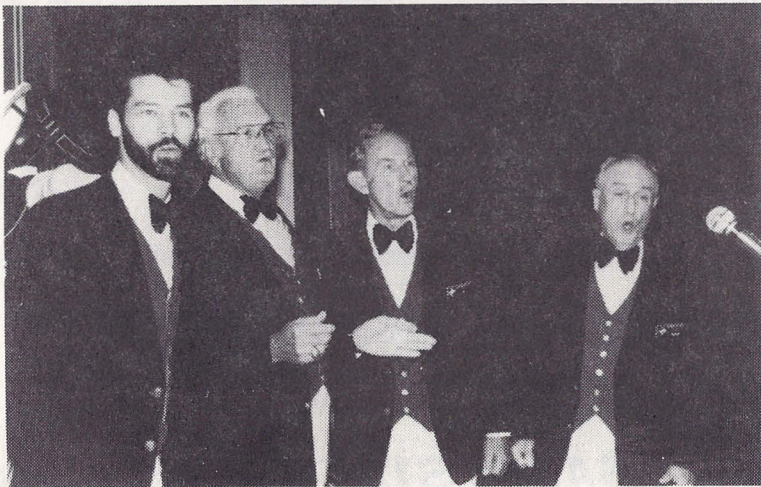
### CHORD COMMANDERS

The CHORD COMMANDERS, from Pensacola and Ft Walton Beach chapters, have been performing for over six years. They appeared before audiences throughout the Panhandle. From left to right: Carter Combs (tenor), Ron Roarke (lead), Bob Romaine (bass), and Lee Leon (baritone).



### EMERALD CHOICE

The beautiful sounds that emanate from the Emerald Coast Chorus' most newly formed, registered quartet, have entertained audiences all over the local area. From left to right: Fred Schneider (tenor), John (J.J.) Jackson (lead), Bill Cowden (bass), and Joe Harrison (baritone).



### GENERATION GAP

Four guys from Bluewater Bay who find it fun to sing together. Why GENERATION GAP? Easy! Paul, the tenor, is just breaking 30 while the other three total 208. From left: Paul Whittlesey (tenor), Harry Blackman (lead), Bob Fitzgerald (baritone), Ed Dibler (bass).



### THE NEWCOMERS

The majority (3) of this quartet, being "freshmen" to barbershop, found the name quite fitting. Tenor anyone? From left to right: Jimmy Dennis (lead), Joe Breedon (tenor), John Mulvey (baritone), and Phil Coty (bass).